

Animal Hide Drawings - Directions

Hides were both practical and ceremonial. When people were sick, they often wore a hide painted with symbols for healing. Some were used for political and spiritual leaders. These types of drawings were made from the northern plain Indians who lived in the Colorado, Oklahoma, and Texas areas.



Things you will need:

- brown paper (16 inches long by 12 inches wide or bigger) or a brown paper bag
If you don't have these things, color the outline on the back.
- pencil - scissors - crayons

1. Using your pencil, draw an outline of an animal (bear, deer, etc.) onto the brown paper. If using a paper bag, you will need to cut it open to make a larger surface.

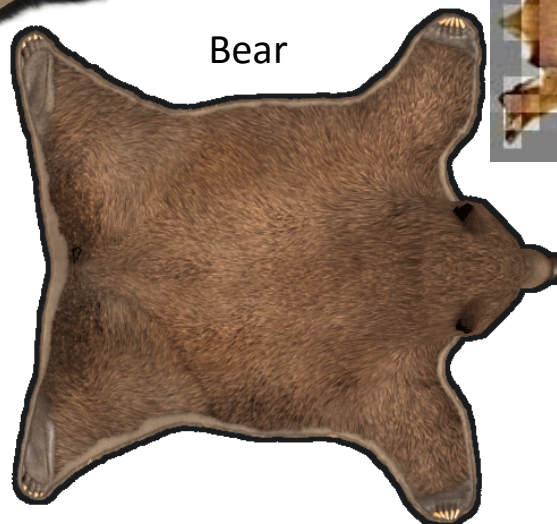
- *You can use the outlines below as examples. You will need to draw the examples much larger on your paper.*

2. Once your outline is drawn, cut it out.

3. Using the crayons, draw something that is important to you, like your family, or a favorite memory you have. Once done, hang your picture up to enjoy!



Buffalo



Bear

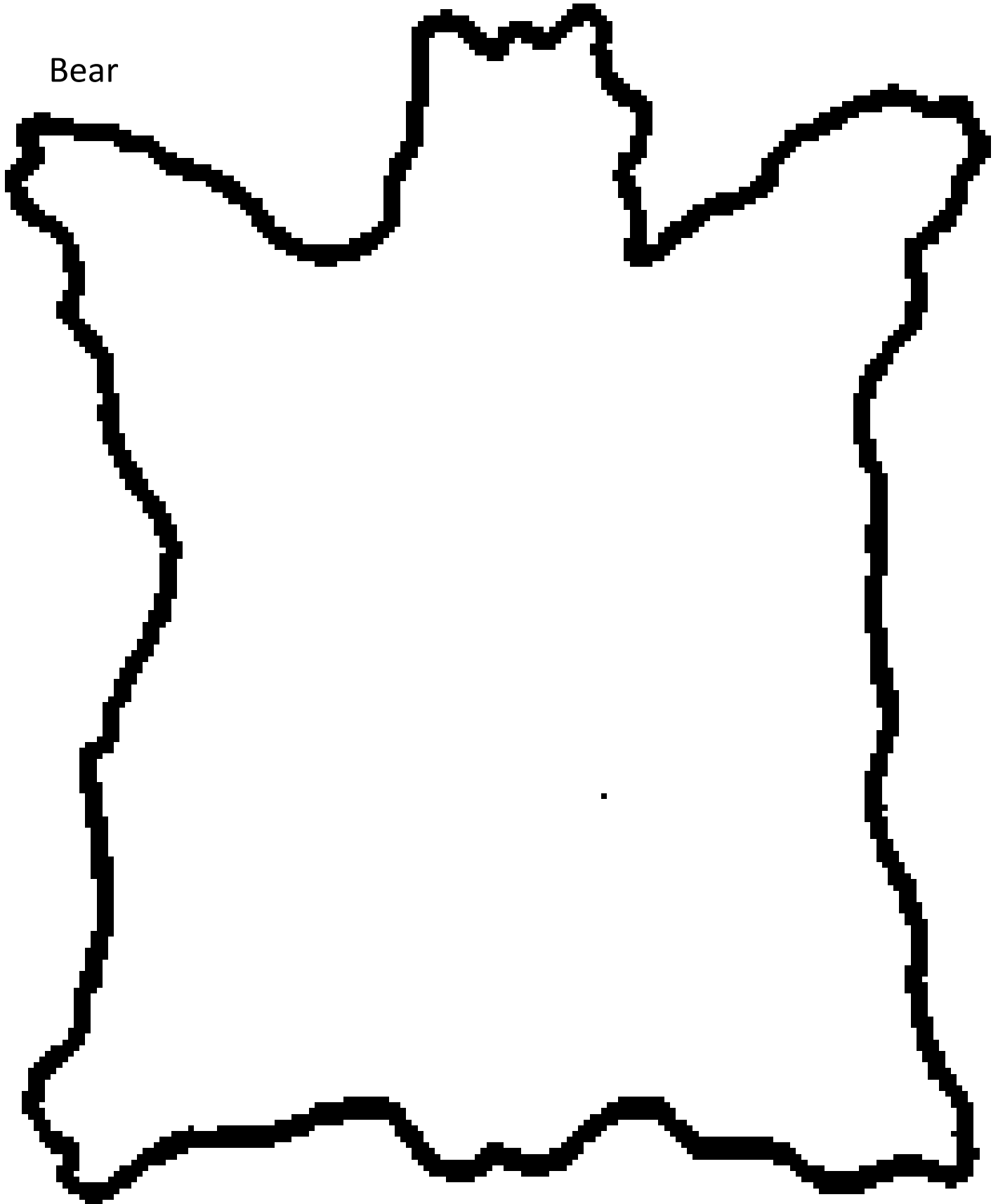


Deer



Animal Hide Drawing

Bear



IMAGINE YOUR STORY! ACTIVITY SHEET

Go to archives.alabama.gov for more information about Alabama!